

KFB Series

Single Stage Backlash \leq 8 arc/min

Double Stage Backlash \leq 12 arc/min

Indication of Model Numbers

| | | | |
|-------------|------------------------------|---|----------------------------|
| KFB | 90 | 10 | MOTOR |
| TYPE | MODEL | RATIO | MOTOR TYPE |
| KFB KFE | 50 70 90 120 145 | SINGLE STAGE 3, 4, 5, 7, 10 DOUBLE STAGE 15, 20, 25, 30, 35, 40, 50, 70, 100 | MOTOR BRAND & MODEL NO. |

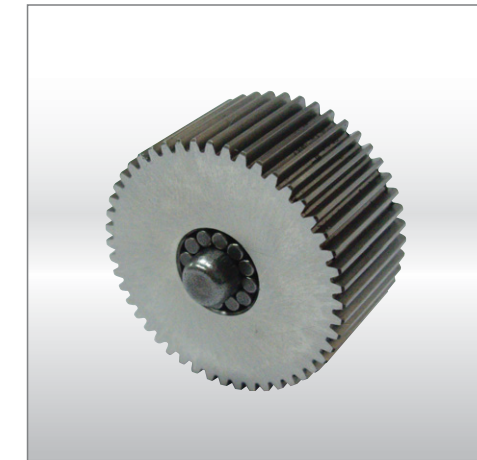


Integrated planetary arm bracket

Planetary arm bracket과 출력 이동은 하나의 비틀림의 강도와 정확도를 상승시키는 구조입니다. 전체 구조는 최대 허용량에서 한번에 정확하게 컨트롤 할 수 있습니다.

Integrated Planetary Arm Bracket

The planetary arm bracket and the output shaft are one-piece constructed to increase torsional rigidity and accuracy. The entire structure is one-time machined for controlling accuracy in the specified tolerance.

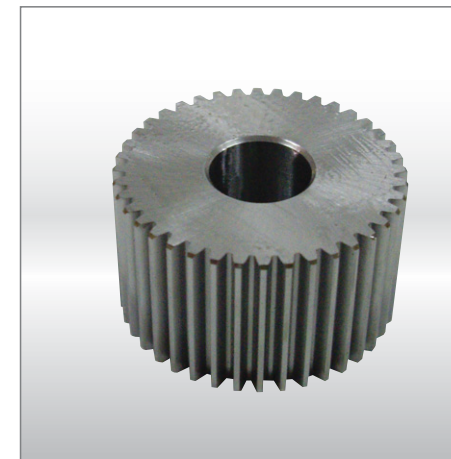


Full needle bearings design

Planetary 변속기어는 접촉면 증가를 위한 retainer 없는 full needle bearing입니다. 구조적 강도와 출력 회전력을 상승시킨 것입니다.

Full Needle Bearings Design

The planetary gear transmission employs full needle bearings without retainer to increase the contact surface, which greatly upgrades structural rigidity and output torque.

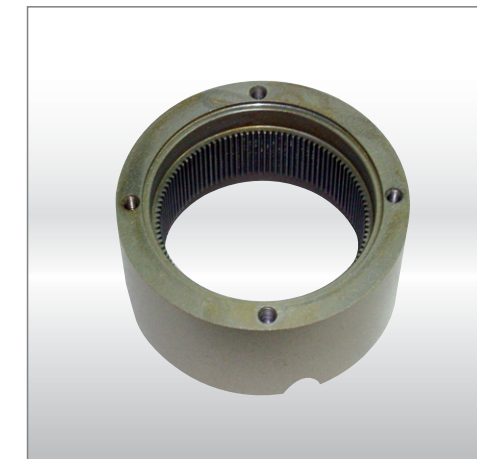


High precision gear machining

감속기 내부의 유성 기어와 선 기어는 높은 품질의 cr-mo 합금(SNCM415)으로 제조되어 있습니다. 기어의 강도는 57-60 HRC이며 grinding skiving으로 가공된 기어는 DIN 6 class 이내의 등급을 유지 합니다.

High Precision Gear Machining

The planetary gear and sun gear are manufactured from high quality Cr-Mo alloy steel (SNCM415), precision machined and carburized to hardness 57-60 HRC. Precision teeth grinding or Skiving assures gear accuracy reaches DIN6 class.



One-piece gearbox body

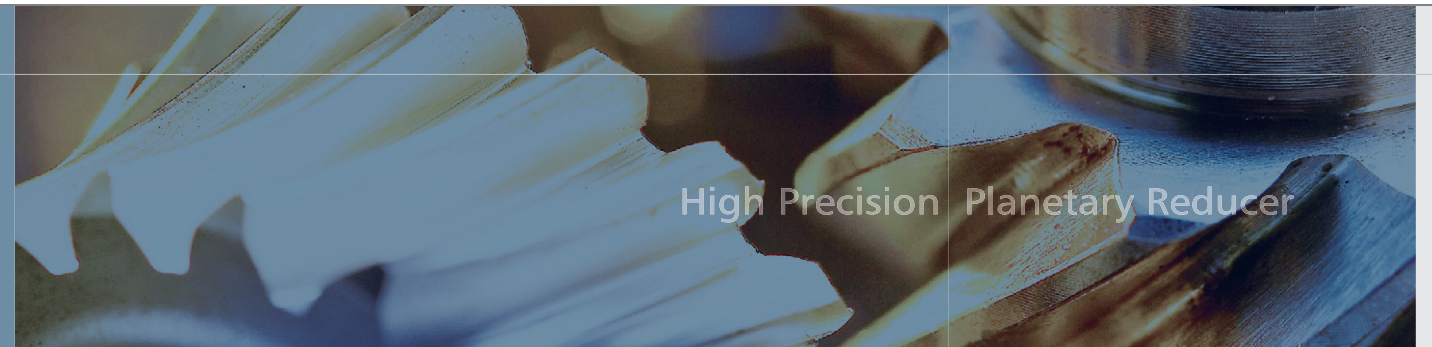
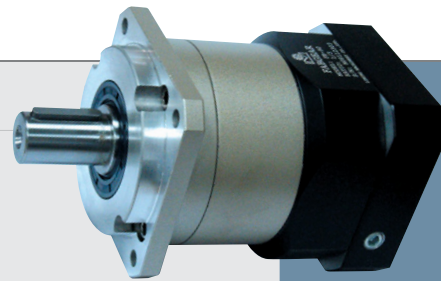
감속기와 내부 링은 일체형 구조로 되어 있습니다. 높은 품질의 기어는 DIN 6 standard 규격입니다.

One-piece Gearbox body

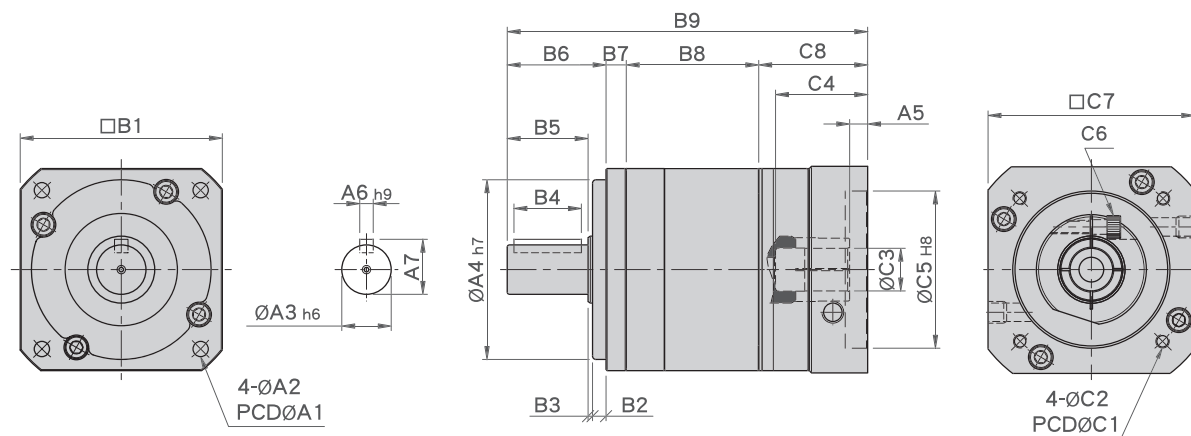
The gearbox and internal ring are one-piece constructed. High gear accuracy meets DIN6 class standard.

MODEL : KFB

Single Reduction
RATIO : 3.4.5.7.10



High Precision Planetary Reducer



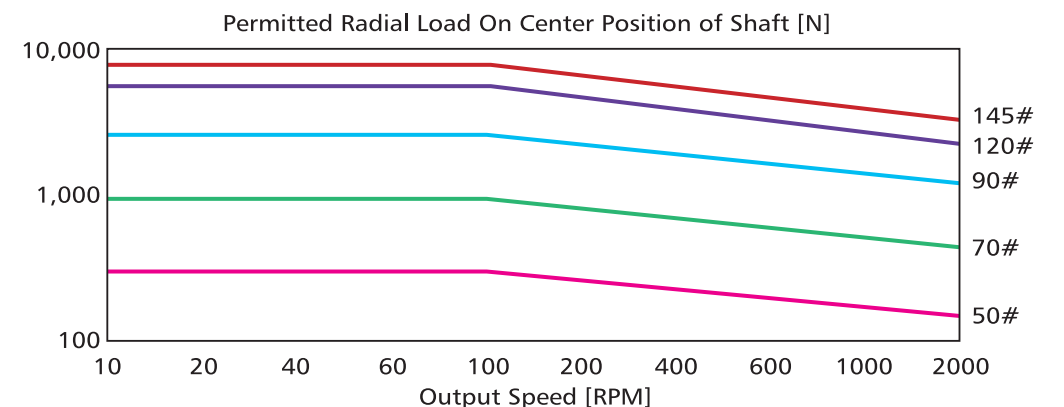
unit:mm

| Model Code | 50 | 70 | 90 | 120 | 145 |
|-------------|-------------------------------------|-------------------------------------|---------------------------------------|---------------------------------------|---|
| A A1 | Ø50 | Ø70 | Ø100 | Ø130 | Ø165 |
| A2 | Ø4.5 | Ø6 | Ø6.8 | Ø9 | Ø11 |
| A3 | Ø13 | Ø16 | Ø22 | Ø32 | Ø40 |
| A4 | Ø35 | Ø50 | Ø80 | Ø110 | Ø130 |
| A5 | 5 | 6 | 8, 22 | 10, 20 | 10 |
| A6 | 5 | 5 | 6 | 10 | 12 |
| A7 | 15 | 18 | 24.5 | 35 | 45 |
| B B1 | 50 | 70 | 90 | 120 | 145 |
| B2 | 4 | 5 | 6 | 8 | 10 |
| B3 | 1 | 1 | 2 | 2 | 3 |
| B4 | 15 | 20 | 30 | 40 | 65 |
| B5 | 20 | 28 | 36 | 50 | 74 |
| B6 | 25 | 34 | 44 | 60 | 87 |
| B7 | 6 | 8 | 9 | 12 | 15 |
| B8 | 37.5 | 49.5 | 59 | 86 | 95 |
| B9 | 100.5 | 132.5 | 160.5, 175 | 227.5, 237.5 | 291 |
| C C1 | 46, 60, 63, 90 | 70,75,90 | 90,100,115,165 | 145, 165 | 145, 200, 215 |
| C2 | M4 x P0.7 M5 x P0.8 M5 x P0.8 | M4 x P0.7 M5 x P0.8 M6 x P1.0 | M6 x P1.0 M8 x P1.25 M10 x P1.5 | M6 x P1.0 M8 x P1.25 M10 x P1.5 | M8 x P1.25 M10 x P1.5 M12 x P1.75 |
| C3 | 5.65, 6, 8 | 6.35,8,10,11,12,14 | 14, 16, 19 | 19,22,24, (28, 32-주문형) | 22,24,28,32,35 |
| C4 | 26 | 33.5, 41.5 | 59, 73.5 | 67, 77 | 84.5 |
| C5 | 30, 40, 50, 70 | 50, 60, 70 | 70,80,110,130 | 110, 130 | 110,114.3,180 |
| C6 | M3 x P0.5 | M4 x P0.7 M5 x P0.8 | M6 x P1.0 | M8 x P1.25 | M10 x P1.5 |
| C7 | 46, 55, 60, 76 | 64, 70, 80 | 92,110,130,142 | 130, 150 | 146, 180, 190 |
| C8 | 32 | 41 | 48.5, 63 | 69.5, 79.5 | 94 |

| Model No. | Unit | Ratio | #50 | #70 | #90 | #120 | #145 |
|------------------------------|-----------|-------|--------------------------------|-------|-------|-------|-------|
| Rated Output Torque | Nm | 3 | 17 | 50 | 125 | 268 | 482 |
| | | 4 | 15 | 45 | 111 | 238 | 426 |
| | | 5 | 14 | 42 | 104 | 223 | 401 |
| | | 7 | 13 | 39 | 98 | 208 | 373 |
| | | 10 | 12 | 37 | 92 | 198 | 356 |
| Max. Output Torque | Nm | 3~10 | 3 Times of Rated Output Torque | | | | |
| Rated Input Speed | rpm | 3~10 | 5,000 | 4,800 | 4,000 | 3,600 | 3,000 |
| Max. Input Speed | rpm | 3~10 | 8,000 | 6,000 | 6,000 | 4,800 | 3,600 |
| Backlash | arcmin | 3~10 | ≤8 | ≤8 | ≤8 | ≤8 | ≤8 |
| Torsional Rigidity | Nm/arcmin | 3~10 | 2.3 | 5 | 15 | 45 | 69 |
| Max. Radial Load | N | 3~10 | 750 | 1,180 | 3,200 | 6,800 | 9,300 |
| Max. Axial Load | N | 3~10 | 325 | 590 | 1,600 | 3,400 | 4,650 |
| Service Life | hr | 3~10 | 20,000 | | | | |
| Efficiency | % | 3~10 | ≥97% | | | | |
| Operating Temperature | °C | 3~10 | -25°C ~ +90°C | | | | |
| Lubrication | | 3~10 | Synthetic oil (SHC 629) | | | | |
| Degree of Gearbox Protection | | 3~10 | IP65 | | | | |
| Mounting Position | | 3~10 | Any | | | | |
| Noise Level | dB | 3~10 | ≤62 | ≤62 | ≤65 | ≤68 | ≤70 |
| Weight ±3% | Kg | 3~10 | 0.63 | 1.57 | 3.22 | 8 | 16 |

Mass Moments of Inertia (Kg · cm²)

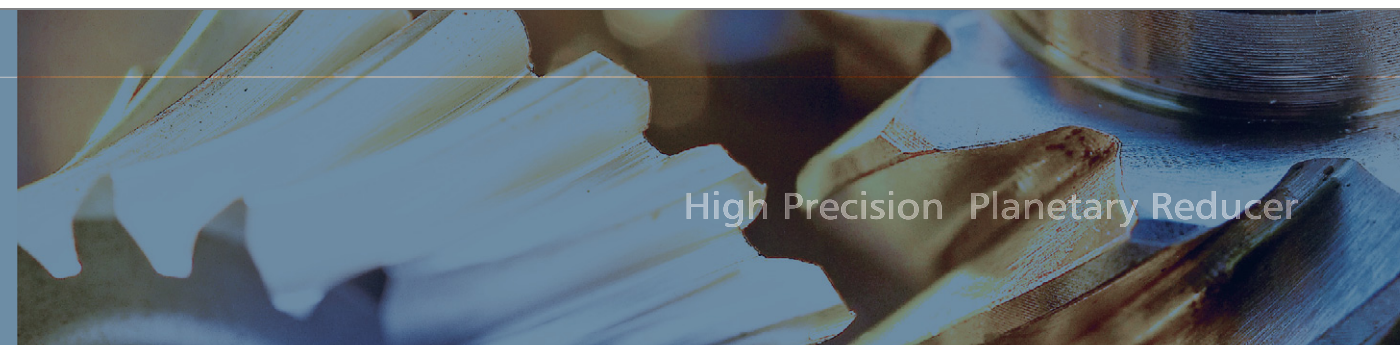
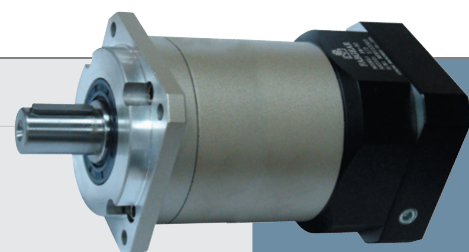
| Ratio | #50 | #70 | #90 | #120 | #145 |
|-------|------|------|------|------|------|
| 3 | 0.03 | 0.15 | 0.57 | 2.99 | 8.84 |
| 4 | 0.03 | 0.13 | 0.45 | 2.52 | 7.23 |
| 5 | 0.03 | 0.12 | 0.44 | 2.49 | 7.12 |
| 7 | 0.03 | 0.12 | 0.42 | 2.41 | 6.85 |
| 10 | 0.03 | 0.12 | 0.41 | 2.36 | 6.74 |



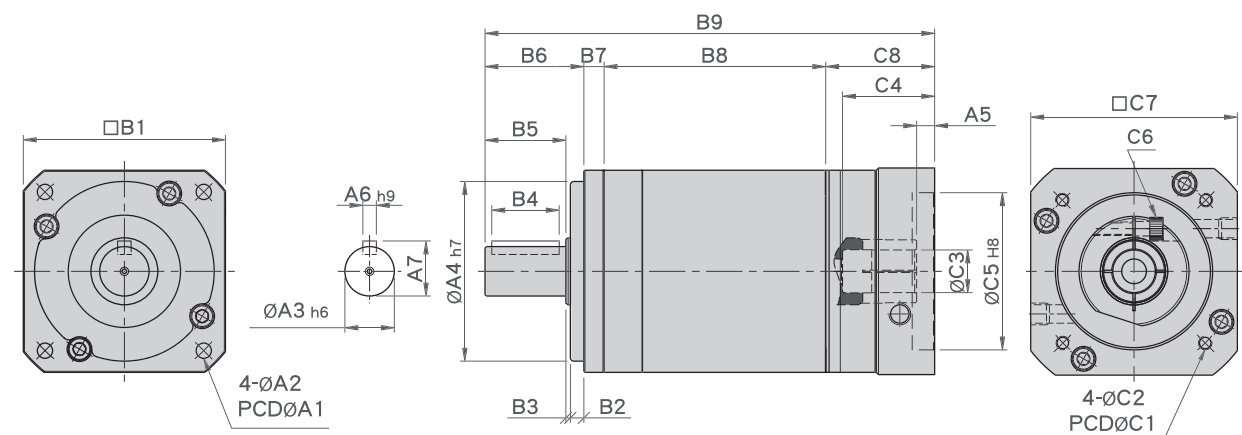
MODEL : KFB

Double Reduction

RATIO : 15.20.25.30.35.40.50.70.100



High Precision Planetary Reducer



unit:mm

| Model Code | 50 | 70 | 90 | 120 | 145 |
|-------------|------------------------|-------------------------------------|---------------------------------------|---------------------------------------|---|
| A A1 | Ø50 | Ø70 | Ø100 | Ø130 | Ø165 |
| A2 | Ø4.5 | Ø6 | Ø6.8 | Ø9 | Ø11 |
| A3 | Ø13 | Ø16 | Ø22 | Ø32 | Ø40 |
| A4 | Ø35 | Ø50 | Ø80 | Ø110 | Ø130 |
| A5 | 5 | 6 | 8, 22 | 10, 20 | 10 |
| A6 | 5 | 5 | 6 | 10 | 12 |
| A7 | 15 | 18 | 24.5 | 35 | 45 |
| B B1 | 50 | 70 | 90 | 120 | 145 |
| B2 | 4 | 5 | 6 | 8 | 10 |
| B3 | 1 | 1 | 2 | 2 | 3 |
| B4 | 15 | 20 | 30 | 40 | 65 |
| B5 | 20 | 28 | 36 | 50 | 74 |
| B6 | 25 | 34 | 44 | 60 | 87 |
| B7 | 6 | 8 | 9 | 12 | 15 |
| B8 | 63.7 | 83.5 | 98.7 | 140 | 158.7 |
| B9 | 126.7 | 166.5 | 200.2, 214.5 | 281.5, 291.5 | 354.7 |
| C C1 | 46, 60, 63, 90 | 70, 75, 90 | 90, 100, 115, 165 | 145, 165 | 145, 200, 215 |
| C2 | M4 x P0.7 M5 x P0.8 | M4 x P0.7 M5 x P0.8 M6 x P1.0 | M6 x P1.0 M8 x P1.25 M10 x P1.5 | M6 x P1.0 M8 x P1.25 M10 x P1.5 | M8 x P1.25 M10 x P1.5 M12 x P1.75 |
| C3 | 5.65, 6, 8 | 6.35, 8, 10, 11, 12, 14 | 14, 16, 19 | 19, 22, 24, (28, 32-주문형) | 22, 24, 28, 32, 35 |
| C4 | 26 | 33.5, 41.5 | 59, 73.5 | 67, 77 | 84.5 |
| C5 | 30, 40, 50, 70 | 50, 60, 70 | 70, 80, 110, 130 | 110, 130 | 110, 114.3, 180 |
| C6 | M3 x P0.5 | M4 x P0.7 M5 x P0.8 | M6 x P1.0 | M8 x P1.25 | M10 x P1.5 |
| C7 | 46, 55, 60, 76 | 64, 70, 80 | 92, 110, 130, 142 | 130, 150 | 146, 180, 190 |
| C8 | 32 | 41 | 48.5, 63 | 69.5, 79.5 | 94 |

| Model No. | Unit | Ratio | #50 | #70 | #90 | #120 | #145 |
|------------------------------|-----------|--------|--------------------------------|-------|-------|-------|-------|
| Rated Output Torque | Nm | 15 | 17 | 50 | 125 | 268 | 482 |
| | | 20 | 15 | 45 | 111 | 238 | 426 |
| | | 25 | 14 | 42 | 104 | 223 | 401 |
| | | 30 | 17 | 50 | 125 | 268 | 482 |
| | | 35 | 13 | 39 | 98 | 208 | 373 |
| | | 40 | 15 | 45 | 111 | 238 | 427 |
| | | 50 | 14 | 42 | 104 | 223 | 402 |
| | | 70 | 13 | 40 | 98 | 208 | 373 |
| | | 100 | 12 | 37 | 92 | 198 | 357 |
| Max. Output Torque | Nm | 15~100 | 3 Times of Rated Output Torque | | | | |
| Rated Input Speed | rpm | 15~100 | 5,000 | 4,800 | 4,000 | 3,600 | 3,000 |
| Max. Input Speed | rpm | 15~100 | 8,000 | 6,000 | 6,000 | 4,800 | 3,600 |
| Backlash | arcmin | 15~100 | ≤ 12 | ≤ 12 | ≤ 12 | ≤ 12 | ≤ 12 |
| Torsional Rigidity | Nm/arcmin | 15~100 | 2.3 | 5 | 15 | 45 | 69 |
| Max. Radial Load | N | 15~100 | 750 | 1,180 | 3,200 | 6,800 | 9,300 |
| Max Axial Load | N | 15~100 | 325 | 590 | 1,600 | 3,400 | 4,650 |
| Service Life | hr | 15~100 | 20,000 | | | | |
| Efficiency | % | 15~100 | ≥ 94% | | | | |
| Operating Temperature | °C | 15~100 | -25°C ~ +90°C | | | | |
| Lubrication | | 15~100 | Synthetic oil (SHC 629) | | | | |
| Degree of Gearbox Protection | | 15~100 | IP65 | | | | |
| Mounting Position | | 15~100 | Any | | | | |
| Noise Level | dB | 15~100 | ≤ 65 | ≤ 65 | ≤ 68 | ≤ 70 | ≤ 72 |
| Weight ±3% | Kg | 15~100 | 0.9 | 2.24 | 4.59 | 11.22 | 22.5 |

Mass Moments of Inertia (Kg · cm²)

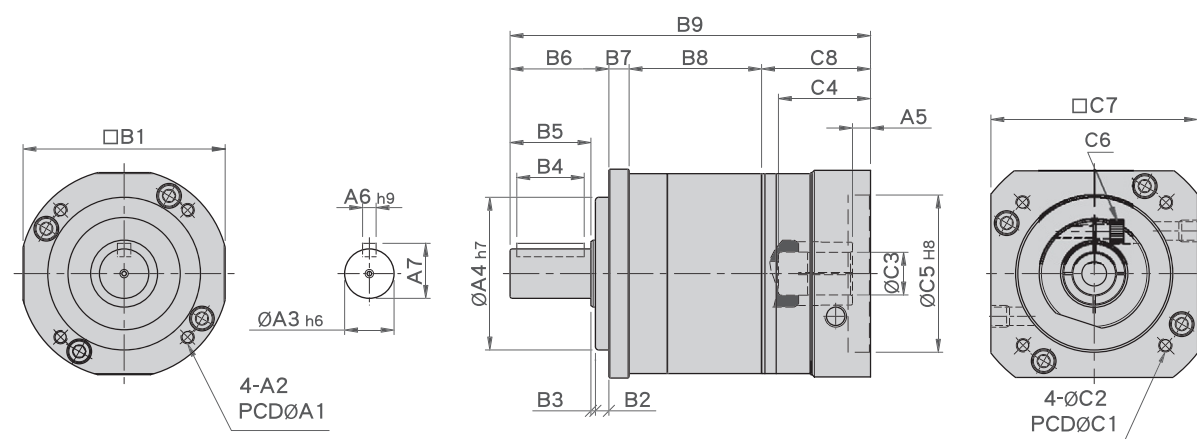
| Ratio | #50 | #70 | #90 | #120 | #145 |
|-------|------|------|------|------|------|
| 15 | 0.03 | 0.02 | 0.13 | 0.42 | 2.52 |
| 20 | 0.03 | 0.02 | 0.13 | 0.42 | 2.52 |
| 25 | 0.03 | 0.02 | 0.13 | 0.42 | 2.52 |
| 30 | 0.03 | 0.02 | 0.13 | 0.42 | 2.33 |
| 35 | 0.03 | 0.02 | 0.13 | 0.40 | 2.33 |
| 40 | 0.03 | 0.02 | 0.13 | 0.40 | 2.33 |
| 50 | 0.03 | 0.02 | 0.13 | 0.40 | 2.33 |
| 70 | 0.03 | 0.02 | 0.13 | 0.39 | 2.29 |
| 100 | 0.03 | 0.02 | 0.13 | 0.36 | 2.29 |

MODEL : KFE

Single Reduction
RATIO : 3.4.5.7.10



High Precision Planetary Reducer



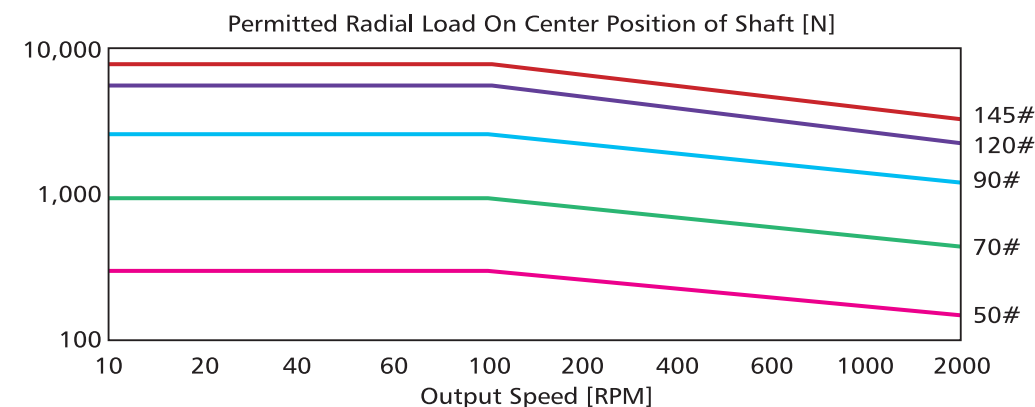
unit:mm

| Model Code | 50 | 70 | 90 | 120 | 145 |
|------------|------------------------|-------------------------------------|---------------------------------------|---------------------------------------|---|
| A | | | | | |
| A1 | Ø42 | Ø60 | Ø80 | Ø105 | Ø130 |
| A2 | M4 x P0.7 | M5 x P0.8 | M6 x P1.0 | M8 x P1.25 | M10 x P1.5 |
| A3 | Ø13 | Ø16 | Ø22 | Ø32 | Ø40 |
| A4 | Ø35 | Ø50 | Ø68 | Ø90 | Ø110 |
| A5 | 5 | 6 | 8, 22 | 10, 20 | 10 |
| A6 | 5 | 5 | 6 | 10 | 12 |
| A7 | 15 | 18 | 24.5 | 35 | 45 |
| B | | | | | |
| B1 | 50 | 70 | 90 | 120 | 145 |
| B2 | 4 | 5 | 6 | 8 | 10 |
| B3 | 1 | 1 | 2 | 2 | 3 |
| B4 | 15 | 20 | 30 | 40 | 65 |
| B5 | 20 | 28 | 36 | 50 | 74 |
| B6 | 25 | 34 | 44 | 60 | 87 |
| B7 | 6 | 8 | 9 | 12 | 15 |
| B8 | 37.5 | 49.5 | 59 | 86 | 95 |
| B9 | 100.5 | 132.5 | 160.5, 175 | 227.5, 237.5 | 291 |
| C | | | | | |
| C1 | 46, 60, 63, 90 | 70, 75, 90 | 90, 100, 115, 165 | 145, 165 | 145, 200, 215 |
| C2 | M4 x P0.7 M5 x P0.8 | M4 x P0.7 M5 x P0.8 M6 x P1.0 | M6 x P1.0 M8 x P1.25 M10 x P1.5 | M6 x P1.0 M8 x P1.25 M10 x P1.5 | M8 x P1.25 M10 x P1.5 M12 x P1.75 |
| C3 | 5.65, 6, 8 | 6.35, 8, 10, 11, 12, 14 | 14, 16, 19 | 19, 22, 24, (28, 32-주문형) | 22, 24, 28, 32, 35 |
| C4 | 26 | 33.5, 41.5 | 59, 73.5 | 67, 77 | 84.5 |
| C5 | 30, 40, 50, 70 | 50, 60, 70 | 70, 80, 110, 130 | 110, 130 | 110, 114.3, 180 |
| C6 | M3 x P0.5 | M4 x P0.7 M5 x P0.8 | M6 x P1.0 | M8 x P1.25 | M10 x P1.5 |
| C7 | 46, 55, 60, 76 | 64, 70, 80 | 92, 110, 130, 142 | 130, 150 | 146, 180, 190 |
| C8 | 32 | 41 | 48.5, 63 | 69.5, 79.5 | 94 |

| Model No. | Unit | Ratio | #50 | #70 | #90 | #120 | #145 |
|------------------------------|-----------|-------|--------------------------------|-------|-------|-------|-------|
| Rated Output Torque | Nm | 3 | 17 | 50 | 125 | 268 | 482 |
| | | 4 | 15 | 45 | 111 | 238 | 426 |
| | | 5 | 14 | 42 | 104 | 223 | 401 |
| | | 7 | 13 | 39 | 98 | 208 | 373 |
| | | 10 | 12 | 37 | 92 | 198 | 356 |
| Max. Output Torque | Nm | 3~10 | 3 Times of Rated Output Torque | | | | |
| Rated Input Speed | rpm | 3~10 | 5,000 | 4,800 | 4,000 | 3,600 | 3,000 |
| Max. Input Speed | rpm | 3~10 | 8,000 | 6,000 | 6,000 | 4,800 | 3,600 |
| Backlash | arcmin | 3~10 | ≤8 | ≤8 | ≤8 | ≤8 | ≤8 |
| Torsional Rigidity | Nm/arcmin | 3~10 | 2.3 | 5 | 15 | 45 | 69 |
| Max Radial Load | N | 3~10 | 750 | 1,180 | 3,200 | 6,800 | 9,300 |
| Max. Axial Load | N | 3~10 | 325 | 590 | 1,600 | 3,400 | 4,650 |
| Service Life | hr | 3~10 | 20,000 | | | | |
| Efficiency | % | 3~10 | ≥97% | | | | |
| Operating Temperature | °C | 3~10 | -25°C ~ +90°C | | | | |
| Lubrication | | 3~10 | Synthetic oil (SHC 629) | | | | |
| Degree of Gearbox Protection | | 3~10 | IP65 | | | | |
| Mounting Position | | 3~10 | Any | | | | |
| Noise Level | dB | 3~10 | ≤62 | ≤62 | ≤65 | ≤68 | ≤70 |
| Weight ±3% | Kg | 3~10 | 0.63 | 1.57 | 3.22 | 8 | 16 |

Mass Moments of Inertia (Kg · cm²)

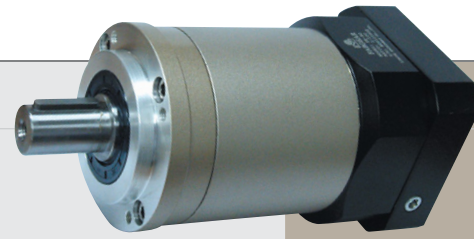
| Ratio | #50 | #70 | #90 | #120 | #145 |
|-------|------|------|------|------|------|
| 3 | 0.03 | 0.15 | 0.57 | 2.99 | 8.84 |
| 4 | 0.03 | 0.13 | 0.45 | 2.52 | 7.23 |
| 5 | 0.03 | 0.12 | 0.44 | 2.49 | 7.12 |
| 7 | 0.03 | 0.12 | 0.42 | 2.41 | 6.85 |
| 10 | 0.03 | 0.12 | 0.41 | 2.36 | 6.74 |



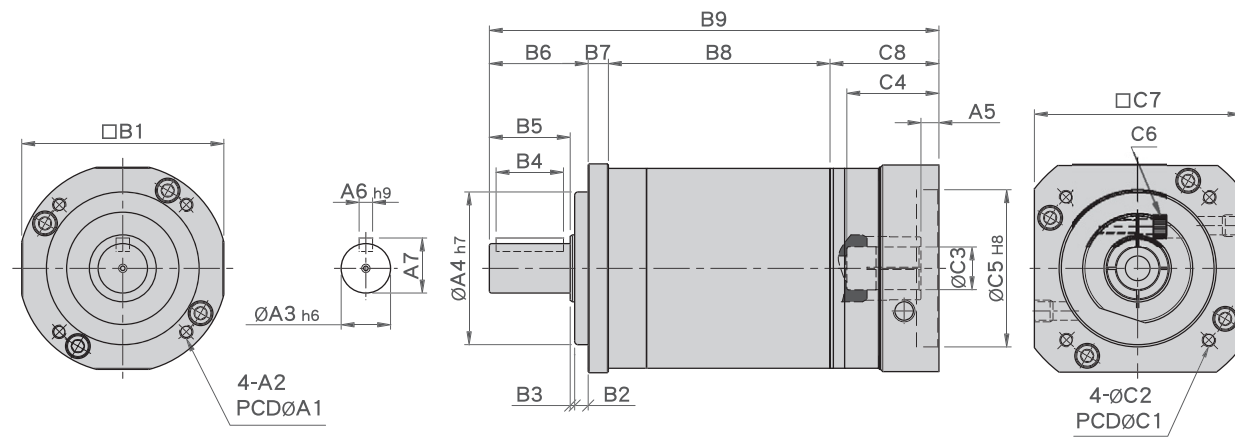
MODEL : KFE

Double Reduction

RATIO : 15.20.25.30.35.40.50.70.100



High Precision Planetary Reducer



unit:mm

| Model Code | 50 | 70 | 90 | 120 | 145 |
|-------------|------------------------|-------------------------------------|---------------------------------------|---------------------------------------|---|
| A A1 | Ø42 | Ø60 | Ø80 | Ø105 | Ø130 |
| A2 | M4 x P0.7 | M5 x P0.8 | M6 x P1.0 | M8 x P1.25 | M10 x P1.5 |
| A3 | Ø13 | Ø16 | Ø22 | Ø32 | Ø40 |
| A4 | Ø35 | Ø50 | Ø68 | Ø90 | Ø110 |
| A5 | 5 | 6 | 8, 22 | 10, 20 | 10 |
| A6 | 5 | 5 | 6 | 10 | 12 |
| A7 | 15 | 18 | 24.5 | 35 | 45 |
| B B1 | 50 | 70 | 90 | 120 | 145 |
| B2 | 4 | 5 | 6 | 8 | 10 |
| B3 | 1 | 1 | 2 | 2 | 3 |
| B4 | 15 | 20 | 30 | 40 | 65 |
| B5 | 20 | 28 | 36 | 50 | 74 |
| B6 | 25 | 34 | 44 | 60 | 87 |
| B7 | 6 | 8 | 9 | 12 | 15 |
| B8 | 63.7 | 83.5 | 98.7 | 140 | 158.7 |
| B9 | 126.7 | 166.5 | 200.2, 214.7 | 281.5, 291.5 | 354.7 |
| C C1 | 46, 60, 63, 90 | 70, 75, 90 | 90, 100, 115, 165 | 145, 165 | 145, 200, 215 |
| C2 | M4 x P0.7 M5 x P0.8 | M4 x P0.7 M5 x P0.8 M6 x P1.0 | M6 x P1.0 M8 x P1.25 M10 x P1.5 | M6 x P1.0 M8 x P1.25 M10 x P1.5 | M8 x P1.25 M10 x P1.5 M12 x P1.75 |
| C3 | 5.65, 6, 8 | 6.35, 8, 10, 11, 12, 14 | 14, 16, 19 | 19, 22, 24, (28.32-주문형) | 22, 24, 28, 32, 35 |
| C4 | 26 | 33.5, 41.5 | 59, 73.5 | 67, 77 | 84.5 |
| C5 | 30, 40, 50, 70 | 50, 60, 70 | 70, 80, 110, 130 | 110, 130 | 110, 114.3, 180 |
| C6 | M3 x P0.5 | M4 x P0.7 M5 x P0.8 | M6 x P1.0 | M8 x P1.25 | M10 x P1.5 |
| C7 | 46, 55, 60, 76 | 64, 70, 80 | 92, 110, 130, 142 | 130, 150 | 146, 180, 190 |
| C8 | 32 | 41 | 48.5, 63 | 69.5, 79.5 | 94 |

| Model No. | Unit | Ratio | #50 | #70 | #90 | #120 | #145 |
|------------------------------|-----------|--------------------|-------------------------|--------|--------------------------------|-------|-------|
| Rated Output Torque | Nm | 15 | 17 | 50 | 125 | 268 | 482 |
| | | 20 | 15 | 45 | 111 | 238 | 426 |
| | | 25 | 14 | 42 | 104 | 223 | 401 |
| | | 30 | 17 | 50 | 125 | 268 | 482 |
| | | 35 | 13 | 39 | 98 | 208 | 373 |
| | | 40 | 15 | 45 | 111 | 238 | 427 |
| | | 50 | 14 | 42 | 104 | 223 | 402 |
| | | 70 | 13 | 40 | 98 | 208 | 373 |
| | | 100 | 12 | 37 | 92 | 198 | 357 |
| | | Max. Output Torque | Nm | 15~100 | 3 Times of Rated Output Torque | | |
| Rated Input Speed | rpm | 15~100 | 5,000 | 4,800 | 4,000 | 3,600 | 3,000 |
| Max. Input Speed | rpm | 15~100 | 8,000 | 6,000 | 6,000 | 4,800 | 3,600 |
| Backlash | arcmin | 15~100 | ≤ 12 | ≤ 12 | ≤ 12 | ≤ 12 | ≤ 12 |
| Torsional Rigidity | Nm/arcmin | 15~100 | 2.3 | 5 | 15 | 45 | 69 |
| Max. Radial Load | N | 15~100 | 750 | 1,180 | 3,200 | 6,800 | 9,300 |
| Max. Axial Load | N | 15~100 | 325 | 590 | 1,600 | 3,400 | 4,650 |
| Service Life | hr | 15~100 | 20,000 | | | | |
| Efficiency | % | 15~100 | ≥ 94% | | | | |
| Operating Temperature | °C | 15~100 | -25°C ~ +90°C | | | | |
| Lubrication | | 15~100 | Synthetic oil (SHC 629) | | | | |
| Degree of Gearbox Protection | | 15~100 | IP65 | | | | |
| Mounting Position | | 15~100 | Any | | | | |
| Noise Level | dB | 15~100 | ≤ 65 | ≤ 65 | ≤ 68 | ≤ 70 | ≤ 72 |
| Weight ±3% | Kg | 15~100 | 0.9 | 2.24 | 4.59 | 11.22 | 22.5 |

■ Mass Moments of Inertia (Kg · cm²)

| Ratio | #50 | #70 | #90 | #120 | #145 |
|-------|------|------|------|------|------|
| 15 | 0.03 | 0.02 | 0.13 | 0.42 | 2.52 |
| 20 | 0.03 | 0.02 | 0.13 | 0.42 | 2.52 |
| 25 | 0.03 | 0.02 | 0.13 | 0.42 | 2.52 |
| 30 | 0.03 | 0.02 | 0.13 | 0.42 | 2.33 |
| 35 | 0.03 | 0.02 | 0.13 | 0.40 | 2.33 |
| 40 | 0.03 | 0.02 | 0.13 | 0.40 | 2.33 |
| 50 | 0.03 | 0.02 | 0.13 | 0.40 | 2.33 |
| 70 | 0.03 | 0.02 | 0.13 | 0.39 | 2.29 |
| 100 | 0.03 | 0.02 | 0.13 | 0.36 | 2.29 |