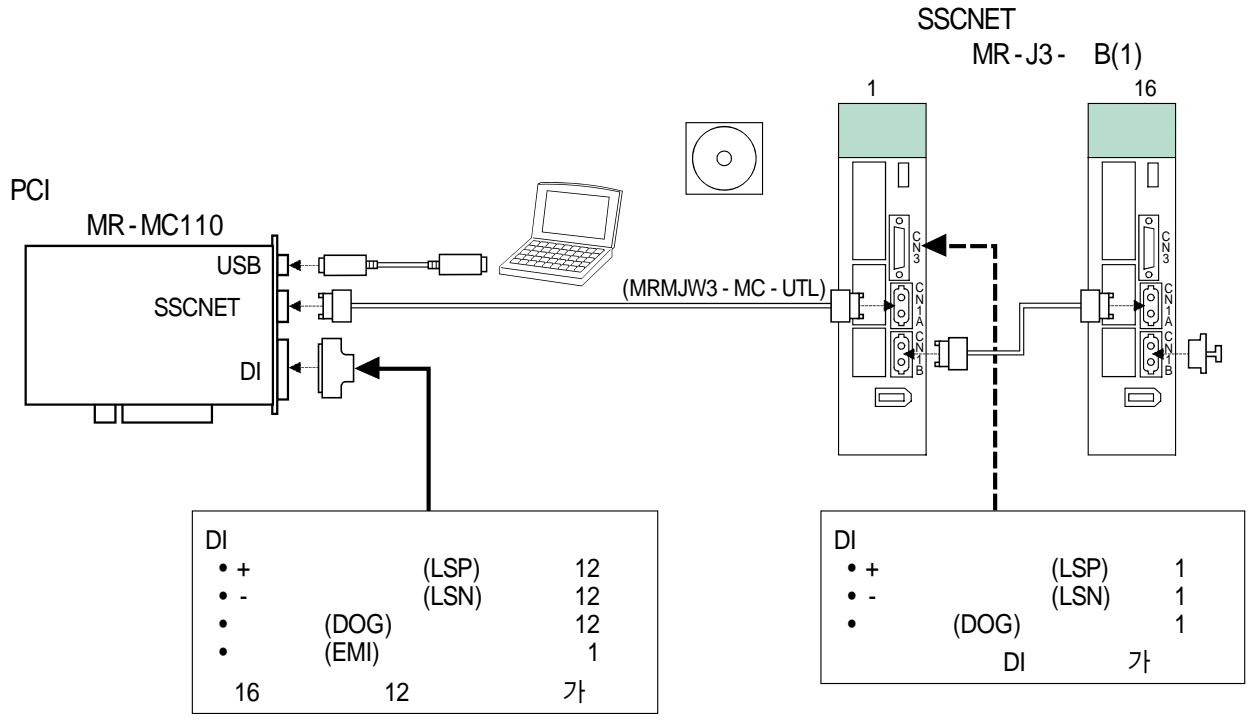


MR-MC110



I/O		MR - J2MCN1	-	(3M) 10150 - 3000VE () 10350 - 52F0 - 008 ()
SSCNET		MR - J3BUS015M	0.15m	() PF - 2D103
		MR - J3BUS03M	0.3m	
		MR - J3BUS05M	0.5m	
		MR - J3BUS1M	1m	
		MR - J3BUS3M	3m	
		MR - J3BUS5M - A	5m	() PF - 2D103
		MR - J3BUS10M - A	10m	
		MR - J3BUS20M - A	20m	
		MR - J3BUS30M - B	30m	() CF - 2D103 - S
MR - J3BUS40M - B		40m		
	MR - J3BUS50M - B	50m		
PC	USB	MR - J3USBCBL3M	3m	USB

(MRMJW3-MC-UTL)

API ()

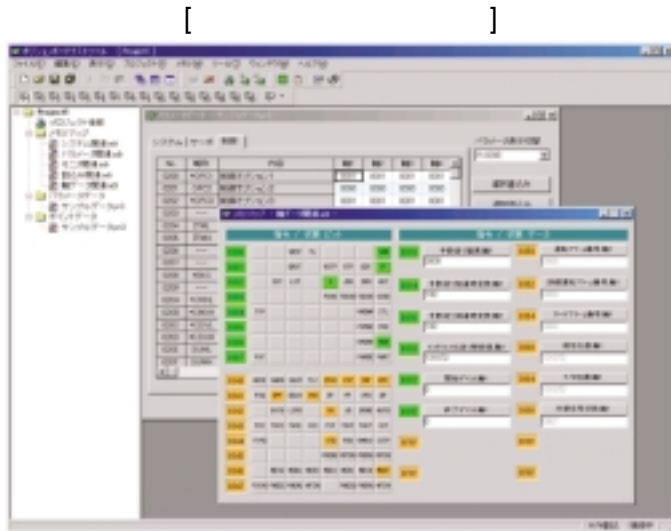
	• / / •		
	• /		
	• /		
	• JOG •		
	• •		
	• • , ,가 • , ,가		
	• ON/OFF • ON/OFF		
	• ON/OFF • ON/OFF		
	• / • /		
	• • /		
	• •		
	• •		
	• H/W • / /		
	• () / •		
	• •		
	• ON/OFF		

) Visual C++® Ver.5.0/Ver.6.0 Visual Basic® Ver.5.0/6.0
 Visual C++, Visual Basic Microsoft Corporation

() (1)
 , ON/OFF 가 ()
)
 () (1)

2 XY

가 ,
 MR Configurator (2)
 , MRConfigurator(-
) , SSCNET ,
) 1. , USB 가
 2. USB 가



XY		XY	

		PCI
	/	32bit/5V
		MR - J3 - B(1)
		50Mbps
		: 20 m (MR - J3BUS - A /
		50m(MR - J3BUS M - B), (m)= (m) x ()
		0.22ms : 4 ()
		0.44ms : 8
		0.88ms : 16
		SSCNET
	JOG	ON
		ON
		OFF Z
		ON Z
		(가)
		ON , OFF Z
		ON
()		/
		가
		4 가
가	가 가	가 가
	가	가 가
	S 가	S 가 가
		가
	가 /	가 / 가
	. . 가	/ /가 가
		ON , OFF (A)
		가
		가
		ON
		() 가 ON
		(4)가 가)
		, ,
		(8)
		2 가
		2
		,
DI		: 12 (16 12 가)
		12 (16 12 가)
		1
PC		USB 1.1
		, API ,
	OS ()	WindowsNT® 4.0(Service Pack3)/Windows® 2000(Service Pack4)/ Windows® XP(Service Pack1)
		0~55 ()
		- 20~65 ()
		10~90%RH(가)
		10~90%RH(가)
(mm)		174.6 x 106.7
		DC5V : 1.2A

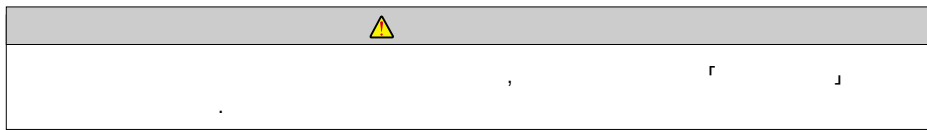


**MITSUBISHI
ELECTRIC**

韓國三菱電機AUTOMATION(株)

: 157-200	가	1480-6
TEL. 02)3660-9511~19	FAX. 02)3664-8372/8335	
: 617-726		578
	가	405
TEL. 051)319-3747~9	FAX. 051)319-3768	
: 702-845		2 1666
		603
TEL. 053)604-6047	FAX. 053)604-6049	
F.A	: 가	1480-6
	TEL. 02)3660-9607	FAX. 02)3663-0475

<http://www.mitsubishi-automation.co.kr>



가 , (.) , 가가 .